

Installation of LogMeIn Remote Control Software



This document provides a step-by-step approach to installing LogMeIn remote control software on a PC or Apple computer.

There are two documents relating to LogMeIn use. The first document (this one) describes the installation process for the target computer, whereas the second document describes the process for accessing the target computer from any remote computer with an active internet connection.



Create a LogMeIn account

Before installing LogMeIn, it is necessary to create a LogMeIn account, with which all your target computers will be associated.

Begin by visiting the LogMeIn web site www.logmein.com and clicking the 'Create an account' link in the top right hand corner of the site (see figure 1.1).

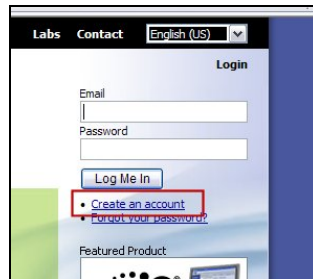


Figure 1.1

You will then see the 'Create an account' screen. Be sure to click on the 'Free' link to the right of the 'LogMeIn Free' option (see figure 1.2).

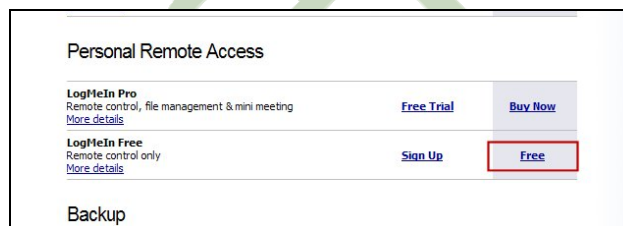


Figure 1.2

The 'New User? Start Here' screen should now be displayed. Fill in all the fields as necessary (see figure 1.3). Be sure to clear the two check-boxes at the foot of the form if you do not wish to be sent marketing information. Once you have completed the form, press the 'Create Account' button and wait a few seconds.

Figure 1.3

Verify your new LogMeIn account

You should now be presented with the *'Verify your LogMeIn account'* screen (see figure 1.4).

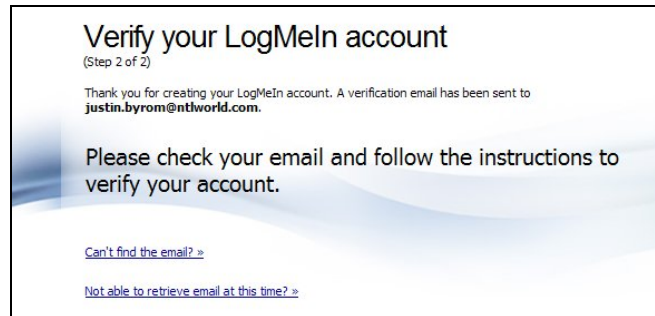


Figure 1.4

At this point, check your email. You should have received two emails from LogMeIn, both of which should have been delivered to the email address you specified when filling in the *'New User? Start Here'* form. Look at the first of the two emails entitled *'LogMeIn – Please activate your account'* and click on the link within the email (see figure 1.5).

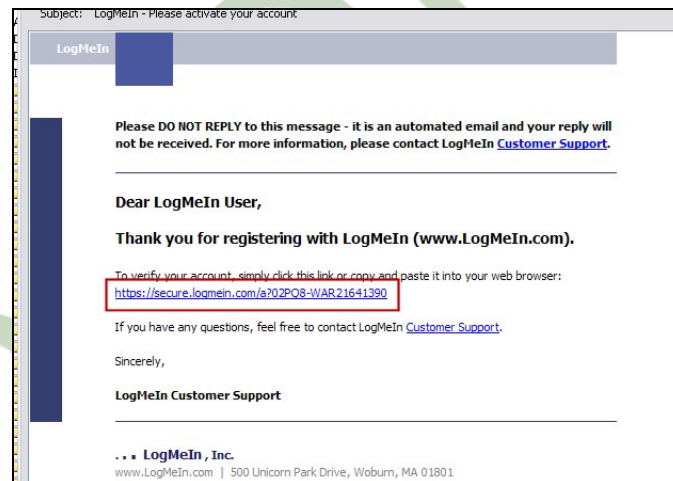


Figure 1.5

Add the first computer to your LogMeIn account

Upon clicking on the link, the 'My Computers' screen should now be displayed. At this point, you are ready to start adding computers to your account. If this computer is the one (or one of several) that you wish to access remotely via LogMeIn, click on the 'Add Computer' link to the right of the page (see figure 1.6).

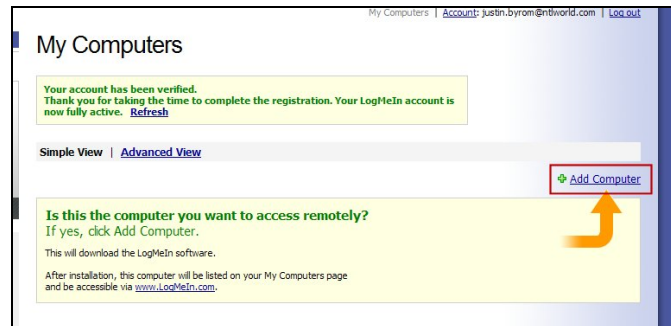


Figure 1.6

The 'Add Computer' screen should now be displayed (see figure 1.7). Click on the green 'Download Now' button and follow the process as directed. At this point, you may be presented with various security messages and/or dialog boxes. Be sure to click on any 'Allow', 'OK', 'Run' or 'Yes' buttons as appropriate. If you do not complete this step, LogMeIn will not install on the target computer and you will not be able to access it remotely.

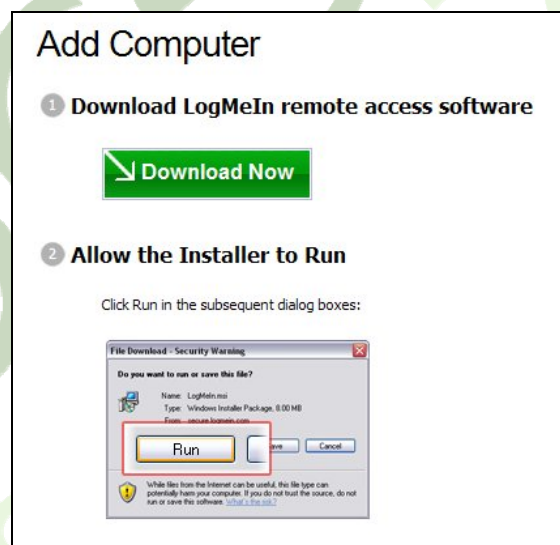


Figure 1.7

Add the first computer to your LogMeIn account - Continued

When the installer has successfully downloaded, it will automatically begin the install process. Once the installer begins, click on the *'Next'* button (see figure 1.8). Next, click on the *'I Agree'* button. Be sure that on the *'Software options'* screen, *'Typical (recommended)'* is selected. Press the *'Next'* button. In the *'Description'* field, type in a friendly name for the computer. Try and avoid entries such as *'desktoppc'*, particularly if you will be adding several computers to your account. Try and make the description specific enough that you will be able to distinguish between many computers in your account simply by looking at the description of each.



Figure 1.8

If you use a password to access your computer, LogMeIn will need this (along with your username – this is normally the name that appears for your 'account' when you log in) when you require remote access.

If you do not use a password to access your computer, the installer will prompt you for a *'Computer Access Code'*. Specify an access code that you are likely to remember. If you forget your access code for the computer, you will NOT be able to access it remotely.

At the *'Choose Destination Location'* prompt, simply click *'Next'* to accept the default settings.

The installer will now attempt to complete the installation. Your screen may go blank or flicker for a few seconds. This is perfectly normal and will cease after a short time.

Once the *'Setup Completed'* screen appears, click *'Finish'* to complete the installation.

To add other computers to the account, you will need to repeat this process on each of them.

Important note regarding access to remote computers

To enable remote access to your computer, it MUST be turned on and LogMeIn must be enabled and have an active internet connection.

On Windows-based computers, the LogMeIn icon will appear in your system tray (see figure 1.9). To enable it, right-click on the icon and left-click on *Enable LogMeIn*. To disable it, right-click on the icon and left-click on *Disable LogMeIn*.

On Apple computers, the LogMeIn icon appears in the top right of the screen.



Figure 1.9